

# Administration Case Report: Open Hysterectomy

This case report represents the individual experience of Dr Jacob Hutchins, and is intended to demonstrate his methodology for using EXPAREL in patients undergoing an open hysterectomy.

Pacira BioSciences, Inc. recognizes that there are alternative methodologies for administering local anesthetics, as well as individual patient considerations when selecting the dose for a specific procedure.

EXPAREL is a local anesthetic that produces postsurgical analgesia in patients aged 6 years and older. It is administered via single-dose infiltration. When infiltrated into the surgical site, it produces local analgesia. It may also be infiltrated in the fascial plane to produce regional analgesia as a regional field block. Regional anesthetic techniques to produce regional analgesia include, but are not limited to, transversus abdominis plane (TAP) block, pectoralis (PEC) and serratus anterior plane (SAP) blocks, erector spinae plane (ESP) block, and quadratus lumborum (QL) block. EXPAREL may also be administered in adults as an interscalene brachial plexus nerve block, a sciatic nerve block in the popliteal fossa, and an adductor canal block to produce postsurgical regional analgesia.

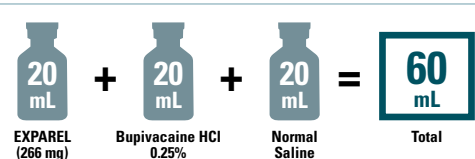
## CASE INFORMATION

<b>Physician Name</b>	Jacob Hutchins, MD
<b>Affiliation</b>	University of Minnesota Medical Center
<b>Surgical Case Performed</b>	Open hysterectomy
<b>Inpatient or Outpatient Procedure</b>	Inpatient

## PATIENT CHARACTERISTICS

<b>Gender</b>	Female
<b>Age</b>	53 years of age
<b>Patient History and Characteristics</b>	Pelvic mass

## PROCEDURAL DETAILS

<b>Incision Size</b>	Infraumbilical midline incision T10-L1
<b>Preoperative Analgesics Used</b>	Administered in advance of the TAP procedure: 50 mcg of fentanyl 1 mg of midazolam
<b>Intraoperative Analgesics Used</b>	fentanyl 450 mcg
<b>Dose of EXPAREL and Total Volume Used</b>	 <p>The diagram illustrates the total volume used. It shows three 20 mL syringes: one labeled 'EXPAREL (266 mg)', one labeled 'Bupivacaine HCl 0.25%', and one labeled 'Normal Saline'. These are summed together (20 mL + 20 mL + 20 mL) to equal a total volume of 60 mL, which is highlighted in a box.</p>

TAP=transversus abdominis plane.

The recommended dose of EXPAREL for infiltration in adults is based on the size of the surgical site, the volume required to cover the area, and individual patient factors that may impact the safety of an amide local anesthetic. The maximum dose of EXPAREL should not exceed 266 mg. The recommended dose of EXPAREL for patients aged 6 to <17 years old is 4 mg/kg, up to a maximum of 266 mg. The recommended dose of EXPAREL in adults for interscalene brachial plexus nerve block, sciatic nerve block in the popliteal fossa, and adductor canal is 133 mg. The recommended dose of EXPAREL in adults for adductor canal block is 133 mg (10 mL) admixed with 50 mg (10 mL) of 0.5% bupivacaine HCl, for a total volume of 20 mL.

EXPAREL can be administered unexpanded (20 mL) or expanded to increase volume up to a total of 300 mL (final concentration of 0.89 mg/mL [ie, 1:14 dilution by volume]) with normal (0.9%) saline or lactated Ringer's solution.

Bupivacaine HCl (which is approved for use in patients aged 12 and older) may be administered immediately before EXPAREL or admixed in the same syringe, as long as the ratio of the milligram dose of bupivacaine HCl to EXPAREL does not exceed 1:2. Admixing may impact the pharmacokinetic and/or physicochemical properties of EXPAREL, and this effect is concentration dependent. The toxic effects of these drugs are additive and their administration should be used with caution, including monitoring for neurological and cardiovascular effects related to local anesthetic systemic toxicity. Other than with bupivacaine, EXPAREL should not be admixed with other drugs prior to administration.

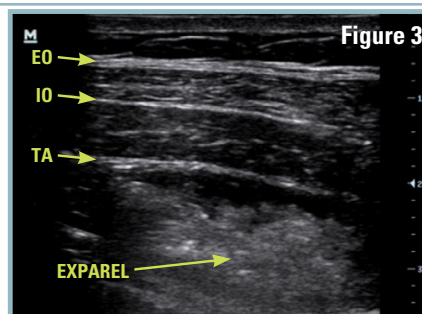
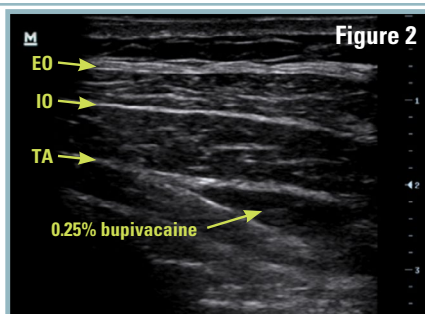
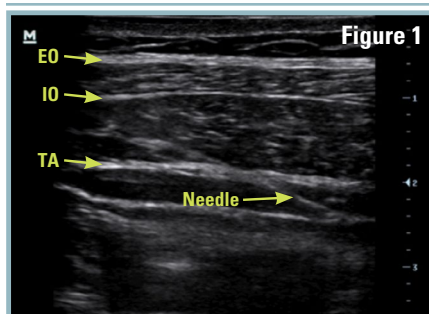
**Please see Important Safety Information on the last page and refer to the accompanying full Prescribing Information, which is also available at [www.EXPARELpro.com](http://www.EXPARELpro.com).**

## INFILTRATION NOTES

- Prior to surgery, the patient was prepped with 2% chlorhexidine gluconate and 70% isopropyl alcohol
- When dry, an ultrasound-guided left classic TAP was performed with a 21-gauge, 100-mm needle with a 30-degree bevel (see Figure 1)
- 2 mL of 0.25% bupivacaine with epinephrine 1:200,000 was used to confirm correct needle position beneath the fascia covering the transversus abdominis as well as to negate intravascular injection (see Figure 2)
- This was then followed by 30 mL of EXPAREL<sup>®</sup> (bupivacaine liposome injectable suspension) solution with aspiration every 5 mL increment (see Figure 3)
  - The TAP was confirmed during the entire injection with ultrasound
- This procedure was then performed on the right side



Watch Dr Hutchins infiltrate with EXPAREL



EO=external oblique; IO=internal oblique; TA=transversus abdominis.

### Indication

EXPAREL<sup>®</sup> (bupivacaine liposome injectable suspension) is indicated to produce postsurgical local analgesia via infiltration in patients aged 6 years and older and regional analgesia in adults via an interscalene brachial plexus nerve block, sciatic nerve block in the popliteal fossa, and an adductor canal block. Safety and efficacy have not been established in other nerve blocks.

### Important Safety Information

EXPAREL is contraindicated in obstetrical paracervical block anesthesia.

Adverse reactions reported in adults with an incidence greater than or equal to 10% following EXPAREL administration via infiltration were nausea, constipation, and vomiting; adverse reactions reported in adults with an incidence greater than or equal to 10% following EXPAREL administration via nerve block were nausea, pyrexia, headache, and constipation.

Adverse reactions with an incidence greater than or equal to 10% following EXPAREL administration via infiltration in pediatric patients six to less than 17 years of age were nausea, vomiting, constipation, hypotension, anemia, muscle twitching, vision blurred, pruritus, and tachycardia.

Do not admix lidocaine or other non-bupivacaine local anesthetics with EXPAREL. EXPAREL may be administered at least 20 minutes or more following local administration of lidocaine.

EXPAREL is not recommended to be used in the following patient populations: patients <6 years old for infiltration, patients younger than 18 years old for nerve blocks, and/or pregnant patients.

Because amide-type local anesthetics, such as bupivacaine, are metabolized by the liver, EXPAREL should be used cautiously in patients with hepatic disease.

### Warnings and Precautions Specific to EXPAREL

Avoid additional use of local anesthetics within 96 hours following administration of EXPAREL.

EXPAREL is not recommended for the following types or routes of administration: epidural, intrathecal, regional nerve blocks **other than interscalene brachial plexus nerve block, sciatic nerve block in the popliteal fossa, and adductor canal block**, or intravascular or intra-articular use.

The potential sensory and/or motor loss with EXPAREL is temporary and varies in degree and duration depending on the site of injection and dosage administered and may last for up to 5 days, as seen in clinical trials.

### Warnings and Precautions for Bupivacaine-Containing Products

**Central Nervous System (CNS) Reactions:** There have been reports of adverse neurologic reactions with the use of local anesthetics. These include persistent anesthesia and paresthesia. CNS reactions are characterized by excitation and/or depression.

**Cardiovascular System Reactions:** Toxic blood concentrations depress cardiac conductivity and excitability, which may lead to dysrhythmias, sometimes leading to death.

**Allergic Reactions:** Allergic-type reactions (eg, anaphylaxis and angioedema) are rare and may occur as a result of hypersensitivity to the local anesthetic or to other formulation ingredients.

**Chondrolysis:** There have been reports of chondrolysis (mostly in the shoulder joint) following intra-articular infusion of local anesthetics, which is an unapproved use.

**Methemoglobinemia:** Cases of methemoglobinemia have been reported with local anesthetic use.

**Disclosure:** Dr Hutchins is a paid consultant for Pacira BioSciences, Inc.

*This administration technique guide represents the individual capacity of Dr Jacob Hutchins and not the capacity of the University of Minnesota, UMP, or Fairview.*

Full Prescribing Information is available at [www.EXPARELpro.com](http://www.EXPARELpro.com).

For more information, please visit [www.EXPARELpro.com](http://www.EXPARELpro.com) or call 1-855-793-9727.